

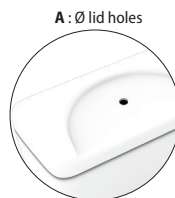
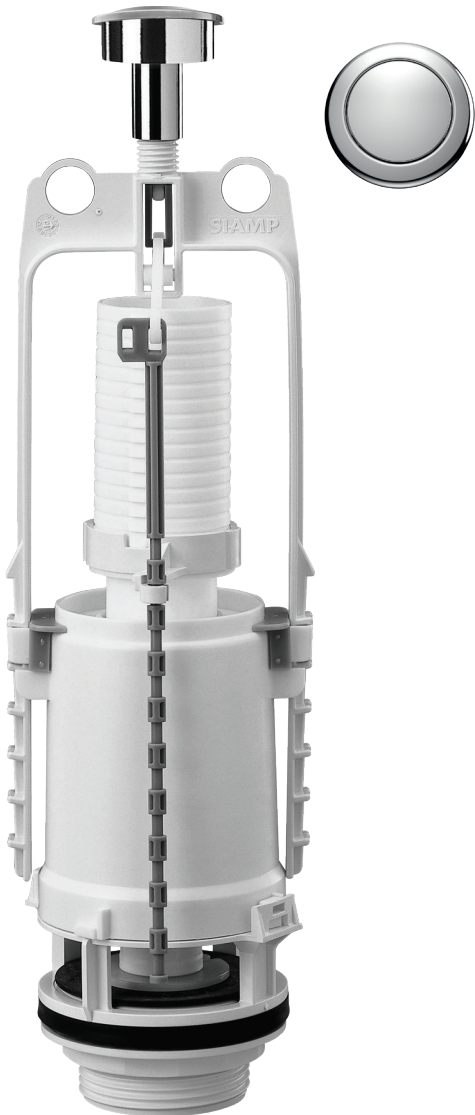
SWITCH 22A

Single flush interruptible



FEATURES

- To be installed into plastic or ceramic cisterns
- **Water saving: interruptible flush**
 - 1st actioning for full flush
 - 2nd actioning for stopping running flush
- **Actuation effort below 20N**
- For lid holes ranging from 18 to 50mm, with or without rosette depending on diameter
- Adjustable bracket, allows maintaining lid
- Adjustable overflow every 5mm
- High flow rate plug (2.75l/s), made from ABS, heavy duty design
- NR/EPDM valve for a total tightness
- SBS moulded elastomer plug seal, shape and elasticity reinforced tightness
- Foam pan seal for compensating pan irregularity



Compatible with:

- Lid hole (A), \varnothing 18 to 50mm
- Drainage hole (D) \varnothing from 58 to 72mm

Adjustable height (B):

- With rosette: from 305 to 339mm (Lid hole (A) \varnothing 18 to 38mm)
- Without: from 321 to 415mm (Lid hole A, \varnothing 39 to 42mm)

Adjustable overflow height:

- 180 to 240mm (C)

